

Written Report regarding Discontinuing Conservatorship

Rahul K. Ghosh
+1 (213) 447-8433
rahulkghosh@icloud.com
www.rahulkghosh.com

Introduction

Since 2012 I have been in the mental health system on the order of people above the government(Rothschilds, Rockefellers and Bilderberg Group). They have used psychiatry to politically persecute me. In particular they do not like my very public views on Israel, Central Banking, JFK assassination, taxation, 9/11, Holocaust, World War I, World War II, War on Drugs and War on Terror. I feel that the medication never helped me but hurt and was given as a punishment. Particular effects of the medication were sedation, lower cognitive abilities(slower thinking and worse memory) and higher food consumption leading to significantly higher body fat levels and diabetes. Psychiatrists have switched between the fabricated reasoning of medication from aggression to mood-stabilization to delusions. They have used these fabricated claims to discredit me, take away due-process rights, inaccurate legal presentation, steal from me, physically torture me and medically torture me. I should note that there are 1,000's of studied known cases of political persecution through psychiatry. I should note, this focus on me comes from me holding the main bloodline of Jesus Christ. During his unknown years Jesus Christ secretly fathered a kid in India. Now over 100M Indians are descendants of him. The main bloodline leads to me which means in the very near future my family will rule the planet. One thing to note, since the age of 7 I have been abducted by aliens 1,000's of times. I feel metal in my brain. I have been on their ships, am familiar with their technology and have been to space numerous times.

Excerpt on History of Political Abuse of Psychiatry

Source:

<https://www.ncbi.nlm.nih.gov/pmc/articles/PMC2800147/>

“The use of psychiatry for political purposes has been a major subject of debate within the world psychiatric community during the second half of the 20th century. The issue became prominent in the 1970s and 1980s due to the systematic political abuse of psychiatry in the Soviet Union, where approximately one-third of the political prisoners were locked up in psychiatric hospitals. The issue caused a major rift within the World Psychiatric Association, from which the Soviets were forced to withdraw in 1983. They returned conditionally in 1989. Political abuse of psychiatry took also place in other socialist countries and on a systematic scale in Romania, and during the first decade of the 21st century, it became clear that systematic political abuse of psychiatry is also happening in the People's Republic of China. The article discusses the historical background to these abuses and concludes that the issue had a major impact on the development of concepts regarding medical ethics and the professional responsibility of physicians.”

Source:

Church of Scientology

“We discover psychoanalysis to have been superseded by tyrannous sadism, practiced by unprincipled men, themselves evidently in the last stages of dementia. This, then, is the end of the trail for psychoanalysis—a world of failure and brutality. Today men who call themselves analysts are merrily sawing out patients’ brains, shocking them with murderous drugs, striking them with high voltages, burying them underneath mounds of ice, placing them in restraints, “sterilizing” them sexually and generally conducting themselves much as their patients would were they given the chance. It is up to us to realize, then, that psychoanalysis in its pure practice is dead the moment the spirit of humanity in which Freud developed the work is betrayed by the handing over of a patient to the merciless misconduct which passes today for treatment.”

Family Educational and Career Background

My mother is an attorney in California. She has a BS in Chemistry from India(University of Calcutta) and JD(University of La Verne) from the USA. She has been a sole practitioner attorney since 2000.

My father is a consulting engineer and financial trader. My father has a BS in Mechanical Engineering(India Institute of Technology) from India. A. He also a Ph.D in Structural Engineering(University of Southern California) from the USA.

My sister is an attorney in California. My sister has a BS(graduated at age 18) in Political Science(California State University at Los Angeles). She has an MA in Political Science Science from the UK(London School of Economics). She has a JD(Georgetown University) from the USA. She currently works

I work as a financial trader in California. I make six figures and have extensive liquid assets along with very valuable intellectual property. I graduated from UCLA at the age of 17 with a BS in Biochemistry. From the age of 18 to 25 I participated in the Dukascopy Bank Trader Contest where I scored in the 99.995th+ percentile. I am number one out of over 20,000 traders on the contest scoring 8 standard deviations above the mean(top quadrillionth in statistical deviation). I should note, the psychiatrists who put me on conservatorship claim I became gravely disabled at the age of 18. This was a completely fabricated claim based on no evidence to put me into conservatorship.

Dukascopy Trader Contest interview where I broke the PnL record in June 2011(note Bilderberg meeting was in Switzerland that month and Dukascopy is the biggest retail currency broker in Switzerland)



Dukascopy | Trader Contest Winner | June 2011

6,028 views · Jul 27, 2011

20 6 SHARE SAVE ...

Dukascopy TV (EN)
32.1K subscribers

Interview with Dukascopy trader contest winner of June. For more info go to <http://www.dukascopy.com/tradercontest/>

SUBSCRIBE

Criminal Background

1. When I was 12, I was arrested for 10 felonies including a capital crime(Terrorism). I tried to overthrow the government due to what I saw as unconstitutional activity. This brought me to the attention of the most powerful people in the World. I eventually had 1 year 9 months probation from this.
2. When I was 18, arrested for Reporting a False Emergency. I called in a SWAT team to someone who was making false statements about me.
3. When I was 27, I was arrested for Criminal Threats. I threatened someone who was making false statements about me. I currently am on probation for this. This was a politically motivated criminal persecution due to my (earlier stated) public views.

In total in my life I have been detained for 677 days and on probation for over 2 years. I have been criminally arrested 3 times and detained(including arrests) 7 times.

I am not gravely disabled or mentally ill

I am not schizophrenic. When I was off medication in Spring 2015 I took a Statistics class at UCLA and scored in the top 3%(A+ grade). Schizophrenia affects about 1% of the population with a correlation towards lower IQ people. People above 160 IQ(99.99th+ percentile which I safely am in) have a less than .1% chance of developing schizophrenia. Those with higher IQ's that develop schizophrenia develop a lighter form too(By the way, the movie A Beautiful Mind about John Nash is fictionalized. John Nash "recovered" and went back to being an MIT professor after refusing medication. John Nash believed in real-life till he was dead he was never schizophrenic and politically persecuted. It was for this reason he is the only Nobel Laureate known not allowed to give an acceptance speech for his Nobel Prize.) I have been able to trade appropriately with risk adjusted returns in the top 1% of traders. I am not gravely disabled. I am not mentally ill. I can take care of my food shelter and clothing.

Monthly Expenses:

Expenses per month		Accum
Supplements	250	250
Food	700	950
Rent	1500	2450
Phone Bill	100	2550
Subscriptions+Classes	50	2600
Clothing	100	2700
Technology	350	3050
Gifts	250	3300
ETC	200	3500

Monthly Income:

Varies due to trading volatility but averages above \$7000+.

Very high IQ People are far less likely to be schizophrenic

Source:

<https://www.ncbi.nlm.nih.gov/pmc/articles/PMC4391822/>

Objective

To clarify the relationship between IQ and subsequent risk for schizophrenia.

Method

IQ was assessed at ages 18-20 in 1,204,983 Swedish males born 1951-1975. Schizophrenia was assessed by hospital diagnosis through 2010.

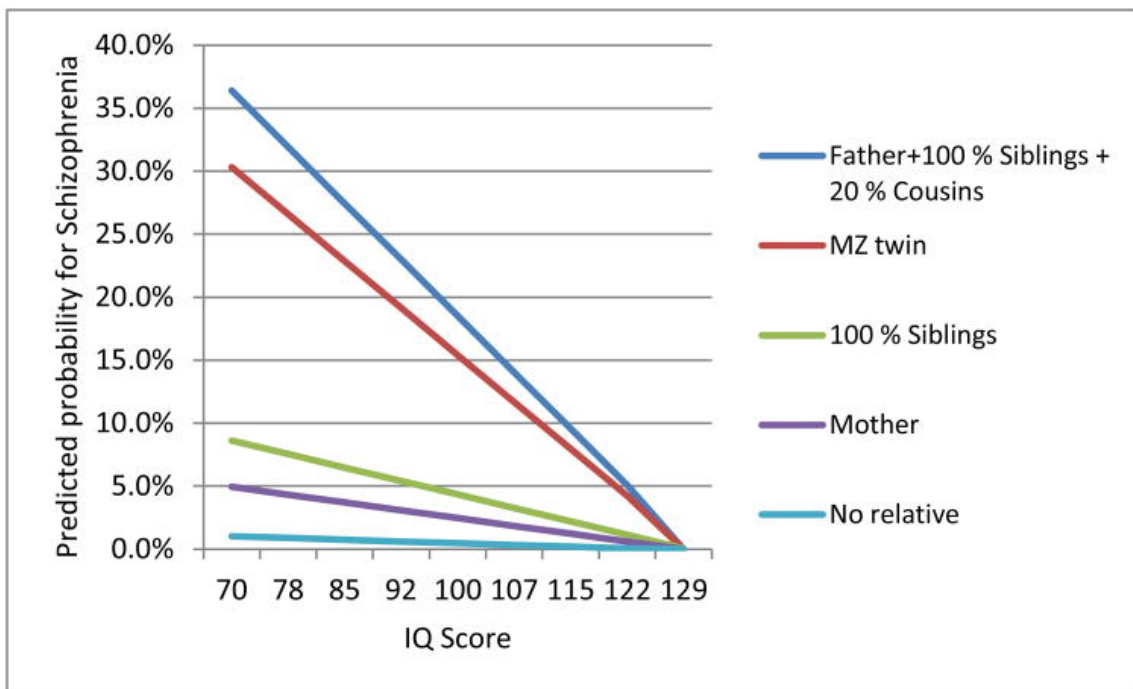
Results

IQ had a monotonic relationship with schizophrenia risk across the IQ range with a mean change of 3.8% in risk per IQ point. This association, stronger in the lower versus higher IQ range, was similar if onsets within five years of testing were censored. No increased risk for schizophrenia was seen in those with highest intelligence. Co-relative control analyses showed a similar IQ-schizophrenia association in the general population and in cousin, half-sibling and full-sibling pairs. A robust interaction was seen between genetic liability to schizophrenia and IQ in predicting schizophrenia risk. Genetic susceptibility for schizophrenia had a much stronger impact on risk of illness for those with low versus high intelligence. The IQ-genetic liability interaction arose largely from IQ differences between close relatives.

Conclusions

IQ assessed in late adolescence is a robust risk factor for subsequent onset of schizophrenia. This association is not the result of a declining IQ associated with insidious onset. In this large, representative sample, we found no evidence for a link between genius and schizophrenia. Co-relative control analyses show that the association between lower IQ and schizophrenia is not the result of shared familial risk factors and may be causal. The strongest effect was seen with IQ differences within families. High intelligence substantially attenuates the impact of genetic liability on the risk for schizophrenia.

Figure from Article



Future Views

I see a landslide victory by Donald Trump in November 2020. I see US stock markets rocketing for several years particularly blue chip tech companies. I see government bond yields staying at near record low levels. This is due to the growing influence of artificial intelligence. There will be much cheaper (in terms of proportion of average income) goods and services, a low inflation (likely deflation) environment and increasing economic growth. There will be increasing natural disasters including hurricanes, pandemic, solar flares and wild fires. We are in the end times period of the Bible and Quran. Aliens and God will turn hostile against global governments within a few years. On another note, the Universe is a simulation in a computer.

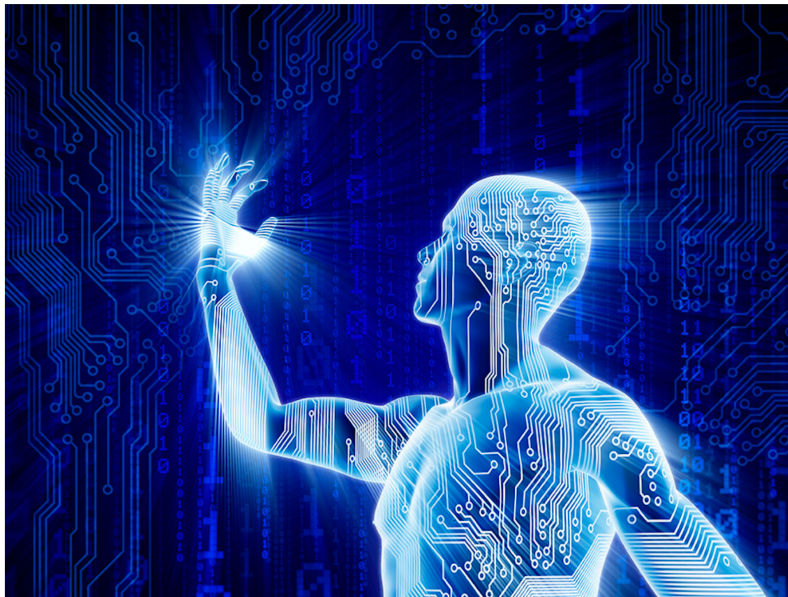
Article by me about future technology

MILLENNIALS, PERSPECTIVES

Singularity: The Coming Age of Artificial Intelligence and Full Immersion Virtual Reality

JULY 30, 2020

Elon Musk said AI is like "summoning the Devil." But one thing is for sure, we should never underestimate the capability of technological progress.



RAHUL GHOSH

People over the course of human history have always underestimated future technological advancements. There is this consistent assumption that we are at or close to the end of technological developments. As negative people are about current living conditions, our ancestors, in their wildest dreams never would have imagined the relatively

People over the course of human history have always underestimated future technological advancements. There is this consistent assumption that we are at or close to the end of technological developments. As negative people are about current living conditions, our ancestors, in their wildest dreams never would have imagined the relatively amazing lives we live now. The population globally is more educated than ever. There is less malnutrition. Infant mortality rates keep getting lower and life expectancy longer. Poverty levels are far lower than ever. Vehicle fatality rates keep getting lower despite the fact that cars are getting cheaper. Electricity prices are cheaper than ever especially for clean energy sources. Things in the future will get far better; we've just barely hit the tip of the iceberg. Think about this, once society used to think it would be impossible to go beyond 30 mph (the speed of a horse). Then we moved to not beyond 50 mph, not beyond 100 mph, not beyond the speed of sound (740 mph). We've now blown way past the level of sound to levels by 2,000 percent. Continuously for the last 50 years we thought we hit limitations in computing power per price, but we kept on blasting through to higher and higher levels. When Moore proposed his law about exponential increase in computing power the scientific community was skeptical. There used to be a time when generating electricity was 100 times the cost by solar compared to coal. Now in most of the United States it is cheaper to generate electricity by solar compared to coal. Battery prices have been plummeting as industries have been scaling production up allowing for cheaper storage of energy and electric cars.

One thing that's interesting is that it is apparent looking over 200,000 years of homo sapien history that technological advancements are happening at a more and more rapid pace. Most humans think about things in terms of a linear scale. But many exponential growth phases seem linear because we only focus on the short-term. Let us think about how a linear trend works starting from a base "1" and adding "2" for every step.... It would go 1, 3, 5, 7, 9, 11, 13, 15. An exponential trend starting from a base "1" and multiplying "2" for every step It would go 1, 2, 4, 8, 16, 32, 64, 128. In the first 3 steps after "1" for both, there isn't much difference, but it breaks out with time with the exponential trend ending up 753 percent higher (128 vs 15) after 7 steps. If you extrapolate another 7 steps, then it ends up 7,181 percent higher.

Artificial Intelligence

Right now, in many technology companies there is heavy investment in artificial intelligence (AI). What is artificial intelligence? Well it's hotly debated in the scientific community what we should consider artificial intelligence. There are very narrow and very wide scopes for what artificial intelligence is. But let us accept for this article that artificial intelligence refers to being able to think on the level of at least an average human being. This includes the ability to recognize patterns, learn, comprehend, logically make inferences and invent. The intelligence of human beings comes from our brains which are about a kilogram each (less than 2 percent of our body weight). It's considered in the scientific community that the human brain is the most complex object we know of in existence. One difference between our brains and computers is that our brains are electro-chemical while computers are electrical.

These are some elements so far that are leading us to the concept that machines can match and even beat human beings. For over two decades, we've had supercomputers beat world chess masters. Some of the best performing hedge funds and traders use algorithms designed by pattern and price recognition of markets by supercomputers. We have facial recognition technology on many applications. Right now, tests with self-driving technology show that they are "safer" than normal human drivers. However, these are generally not considered artificial intelligence by the scientific community. It's primarily coded "logic" that can mimic intelligence in certain specific situations.

One thing that is critical to making artificial intelligence is having human brain capacity in processing speed and memory. Human brains operate at 10^{17} calculations per second with 10^{12} bytes of memory. Right now, only expensive bulky supercomputers have that level of computing power. But as Moore's Law continues in exponential computer power it will become more affordable and less bulky. Calculations by current Google's Director of Engineering and leading technologist Ray Kurzweil in his 2005 book "Singularity is Near" implied that Moore's Law will be able to go to at least 10^{50} calculations per second for the weight of the human brain. Recently, Google has announced it would be capable of making a quantum processor by 2030 that can do 10^{300} calculations per second. However, it is important to note, that in addition to having the appropriate computing power we also need the "software" that is capable of "intelligence."

Reinvent and Redesign

It is believed that once artificial intelligence gets to a certain level, it may be able to reinvent and redesign itself. A machine that can design a smarter more efficient machine can lead to a runaway stage. In a runaway stage where each new generation of machines would keep engineering a next more efficient, faster generation of machines at an increasing pace. Eventually it will lead to a near vertical movement up in the charts on technological development where technological development would appear to be near instantaneous. This point is referred to as singularity. Development pace will tend towards infinity though never absolutely reach it. Over the recent years, the concept of singularity has gained acceptance among the scientific community that it will happen. However, there is a large disagreement over when it will happen. For some people it can take place as soon as a few years while others believe in a century, the average year among technologists for singularity seems to be the middle of the 21st century.

How can vastly superior computing power and artificial intelligence help us? Well for one we can have neural computer connections that vastly increase human intelligence. By vastly increase, think of the average person being able to instantly learn all the educational material ever at all universities within a fraction of second. Imagine being able to accurately simulate quantum and subatomic relations of atoms. This would allow us to design enzymes and catalysts that can vastly increase the rate of reactions. Such molecules can be used to take carbon out of the atmosphere and fix it into far stronger than titanium construction/transportation/consumer materials, food, make batteries, and more. We would be able to design far more efficient solar panels. We can produce room temperature superconductors. We would be able to design food such that it tastes as good as we want for taste buds and be as healthy as we want. We would be able to freeze and reverse aging such that we have eternal youth. Aging and death are biological

mechanisms for all species to create genetic diversity and can be conquered with singularity. We can have full immersion virtual reality.

The following article is just intended as an introduction to singularity. The implications are far reaching and the technologies capable are probably well beyond what I or leading technologists can conceive of us. Some technologists have noted that uncontrolled growth in AI can be dangerous. The AI can revolt again us. This how it is in the movie "I, Robot." Leading tech entrepreneur Elon Musk has mentioned before that AI is like "summoning the Devil." But one thing is for sure, we should never underestimate the capability of technological progress. It is constantly moving ahead forward as it has been for the last 200,000 years of human history at an increasing pace. Some technologists note we may even be able to travel faster than light with "exotic" technologies in the future. To some of you who are older reading this article, would you have imagined that we would today have such a convenient lifestyle with laptops, desktops, tablets, cell phones, GPS, search engines, social networks, ordering online food, Amazon 1-day delivery and more? There are times when technological progression temporarily plateaus and then sees sudden rapid progression from a major (or series of) inventions.

My motion is to close conservatorship permanently

It is in the interest of justice, not just for me, but for society and humanity that conservatorship be closed permanently. I was never mentally ill or gravely disabled. The claims by all of the psychiatrists are false. It is critical to maintain a system where people are let to live in peace, justice, liberty and pursuit of happiness. This is what the United States was founded on and should be a basic right in humanity. It is a bad sign for society that cases like these are tried and unjust rulings are made.

Additionally I would like to add spreadsheets on my tri-annual technology expense, monthly work out supplements expense, planned online classes, annual clothing expense, and daily schedule.

Supplements cost per month		Accum
Nitraflex	90	90
Vitamin C	30	120
GABA	30	150
Amino Acids	30	180
ETC	70	250

Clothing Expenses	Units	Per Unit	Cost
Jeans	12	30	360
Polos	12	15	180
Shirts	12	14	168
Shorts	12	15	180
Underwear	12	14	168
		Annual	1056
		Monthly	88

	Classes
1	Python
2	Cybersecurity
3	C++
4	Java
5	Machine Learning
6	AI
7	Web Development
8	Database Management
9	Individual Taxation
10	Business Taxation
11	Foundation Regulations

Daily Schedule	Minutes	Accum
Sleeping	350	350
Work (-SN)	210	560
Fitness (-SN)	20	580
Family	70	650
Tasks	90	740
Browsing	90	830
Classes	140	970
Praying	200	1170
Shower	25	1195
Grooming	5	1200
Friends	30	1230
Eating	70	1300
Extra	140	1440

Clothing Expenses	Units	Per Unit	Cost
Jeans	12	30	360
Polos	12	15	180
Shirts	12	14	168
Shorts	12	15	180
Underwear	12	14	168
		Annual	1056
		Monthly	88

Technology Expenses	Per Unit Tri-Annual
Desktop	4000
Laptop	3000
Tablet	1200
Phone	1200
Fitness	3000
Tri-Annual	12400
Monthly	344